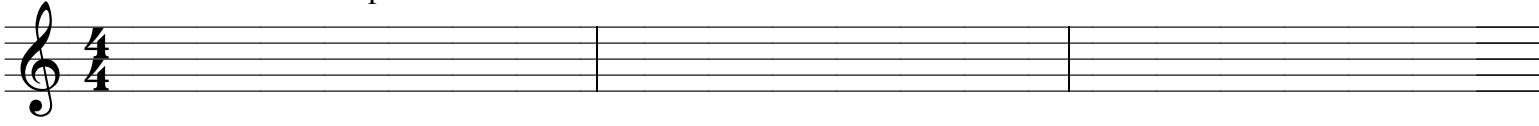


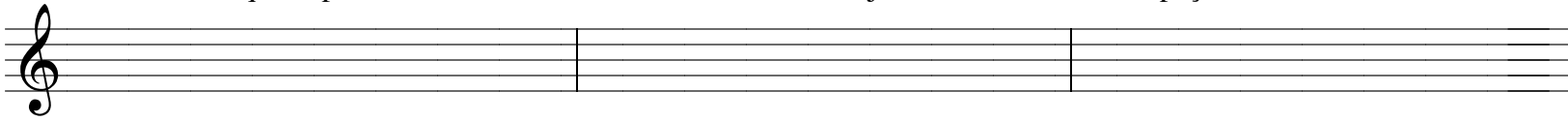
Formula de compasso 4/4

1 2 3 4



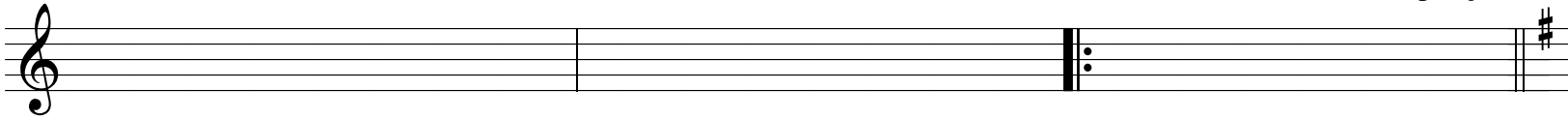
O que é pauta ?

É um conjunto de 5 linhas e 4 espaços



Clave de Sol

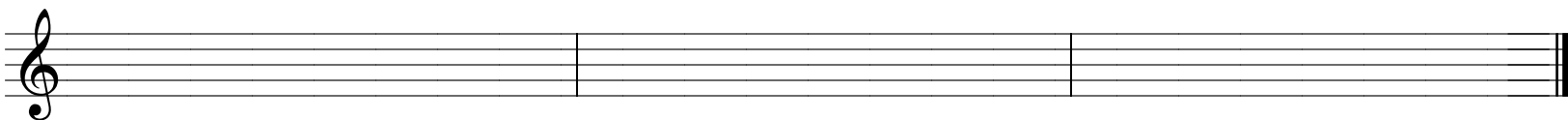
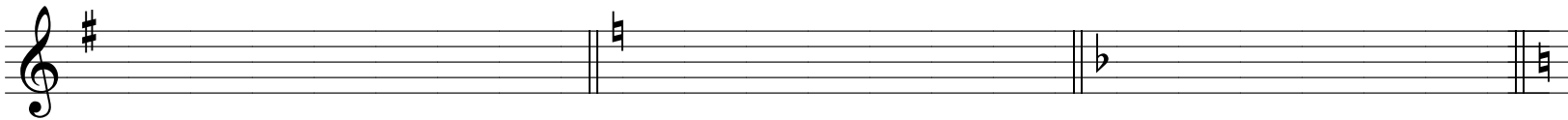
Ritornelo = Sinal de Repetição



Sustenido

Bequadro

Bemol





### Notas Agudas

1,0 1,1 1,3 1,5 1,7 1,8 1,10 1,12

MI FÁ SOL LÁ SI DÓ RÉ MI

### Notas Médias

4,2 4,3 3,0 3,2 2,0 2,1 2,3

MI FÁ SOL LÁ SI DÓ RÉ

### Notas Graves

6,0 6,1 6,3 5,0 5,2 5,3 4,0

MI FÁ SOL LÁ SI DÓ RÉ

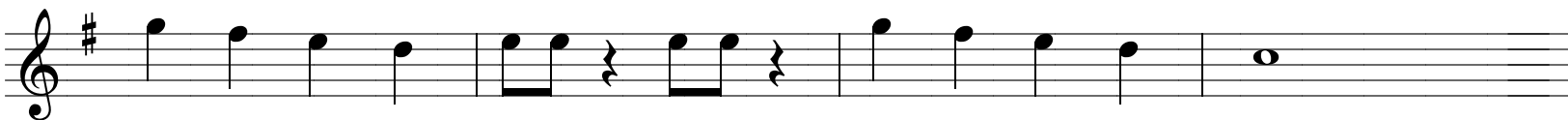
### RITMOS

SEMÍBREVE MÍNIMA SEMÍNIMA

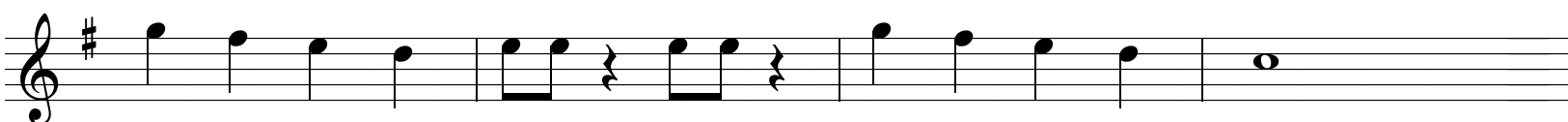
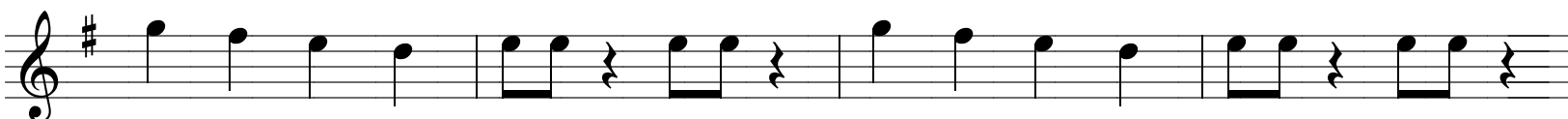
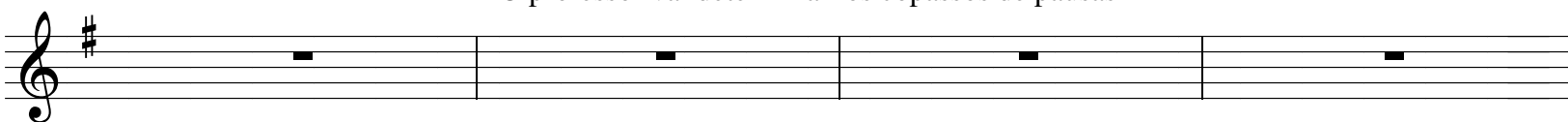
COLCHEIA SEMICOLCHEIA

# We Will Rock You

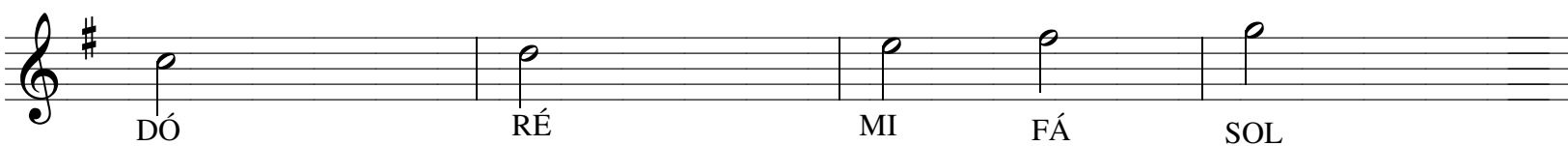
violão I



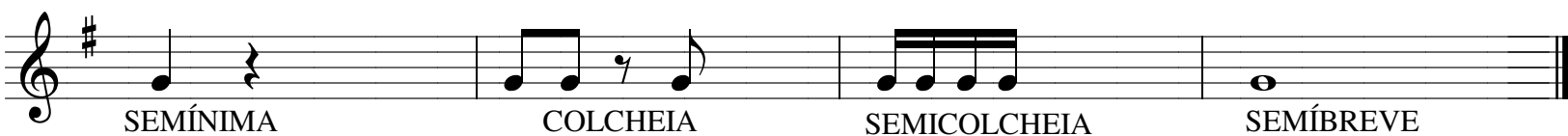
O professor vai determinar os compassos de pausas



Notas



Ritmos



# Imagine

violão I

Chords: C, F, C, F, C, F, C, Dm, Dm/C, G, G, C, F, C, F, C, F, F, C, Dm, D/C, G, G, C

## Ritmos

semibreve      mínima      colcheia      Ligadura de valor

## Notas

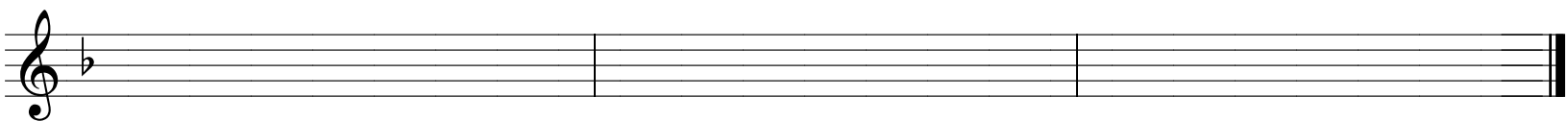
SOL 3,0      LÁ 3,2      SI 2,0      DÓ 2,1      RÉ 2,3

MI 1,0      FÁ 1,1      SOL 1,3

# My Heart Will Go On - Titanic Theme

violão I

The image displays a musical score for guitar (violão I) in 4/4 time, featuring a key signature of one flat (B-flat). The score is organized into eight staves. The first staff begins with a treble clef, a key signature of one flat, and a 4/4 time signature. It contains three measures of whole rests, followed by a repeat sign and a quarter note G4, a quarter note F4, and a quarter note E4. The second staff continues with a quarter note D4, a quarter note C4, a quarter note B3, and a quarter note A3, followed by a quarter note G3, a quarter note F3, and a quarter note E3. The third staff features a quarter note D3, a quarter note C3, a quarter note B2, and a quarter note A2, followed by a quarter note G2, a quarter note F2, and a quarter note E2. The fourth staff contains a quarter note D2, a quarter note C2, a quarter note B1, and a quarter note A1, followed by a quarter note G1, a quarter note F1, and a quarter note E1. The fifth staff has a quarter note D1, a quarter note C1, a quarter note B0, and a quarter note A0, followed by a quarter note G0, a quarter note F0, and a quarter note E0. The sixth staff includes a quarter note D0, a quarter note C0, a quarter note B-1, and a quarter note A-1, followed by a quarter note G-1, a quarter note F-1, and a quarter note E-1. The seventh staff shows a quarter note D-1, a quarter note C-1, a quarter note B-2, and a quarter note A-2, followed by a quarter note G-2, a quarter note F-2, and a quarter note E-2. The eighth staff consists of four measures of whole rests. The score concludes with a double bar line at the end of the eighth staff.



# Hino á alegria

violão I





Brilha Brilha Estrelinha

Musical notation for the song "Brilha Brilha Estrelinha". It consists of three staves of music in G major (one sharp) and 4/4 time. The melody is simple and repetitive, using quarter and half notes. The first staff contains the first four measures, the second staff contains the next four measures, and the third staff contains the final four measures, ending with a double bar line and a key signature change to three sharps (F# major).

Cai , Cai Balão

Musical notation for the song "Cai , Cai Balão". It consists of two staves of music in G major (one sharp) and 4/4 time. The melody is simple and repetitive, using quarter and half notes. The first staff contains the first four measures, and the second staff contains the next four measures, ending with a double bar line and a key signature change to three sharps (F# major).

Parabéns para você

Musical notation for the song "Parabéns para você". It consists of three staves of music in G major (one sharp) and 4/4 time. The melody is simple and repetitive, using quarter and half notes. The first staff contains the first four measures, the second staff contains the next four measures, and the third staff contains the final four measures, ending with a double bar line.

# Asa Branca

violão I

The image displays a musical score for guitar (violão I) for the piece 'Asa Branca'. The score is written in 2/4 time and consists of eight staves. The first staff begins with a treble clef and a 2/4 time signature. The music is primarily composed of eighth and quarter notes, with some rests and a repeat sign. The second staff continues the melody with similar rhythmic patterns. The third staff features a more complex rhythmic pattern with dotted notes and eighth notes. The fourth staff consists of a series of quarter notes. The fifth staff begins with a repeat sign and continues with quarter notes. The sixth staff features a series of quarter notes with a repeat sign at the end. The seventh staff continues the melody with quarter notes and a repeat sign at the end. The eighth staff is an empty staff, likely a placeholder for a second guitar part or a specific fingering.